

Suburb Profile Report

Mount Nebo QLD 4520

Prepared on 04 December 2020

Prepared by Jason Mrak | Jason@wardrealestate.com.au | +61413577211



CoreLogic[®]





25km
Distance from GPO

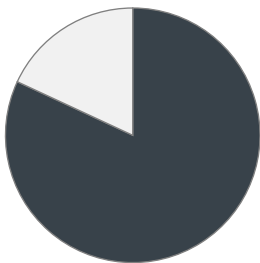


432
Population
0.0%
5 year population change



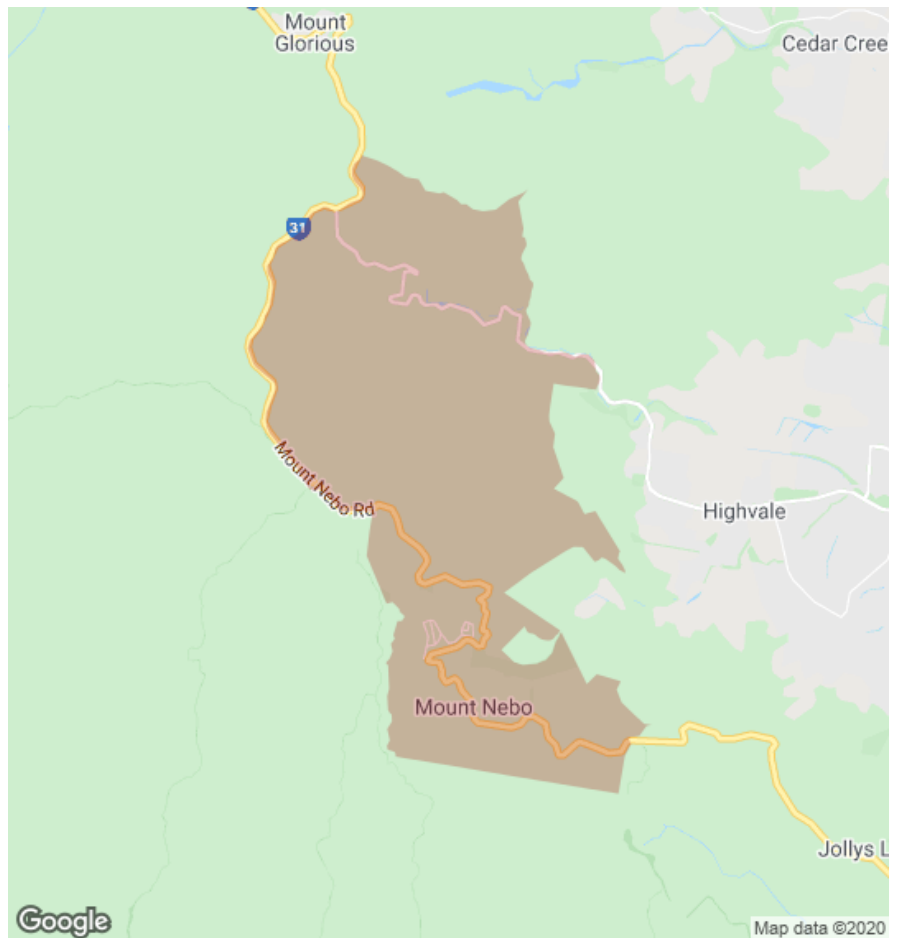
→
Average length of ownership

18%



82%

■ Owner Occupiers □ Renters



The size of Mount Nebo is approximately 14.4 square kilometres. It has 11 parks covering nearly 70% of total area. The population of Mount Nebo in 2011 was 432 people. By 2016 the population was 432 showing a stable population in the area during that time. The predominant age group in Mount Nebo is 40-49 years. Households in Mount Nebo are primarily childless couples and are likely to be repaying \$1800 - \$2399 per month on mortgage repayments. In general, people in Mount Nebo work in a professional occupation. In 2011, 71.8% of the homes in Mount Nebo were owner-occupied compared with 77.9% in 2016. Currently the median sales price of houses in the area is \$440,000.

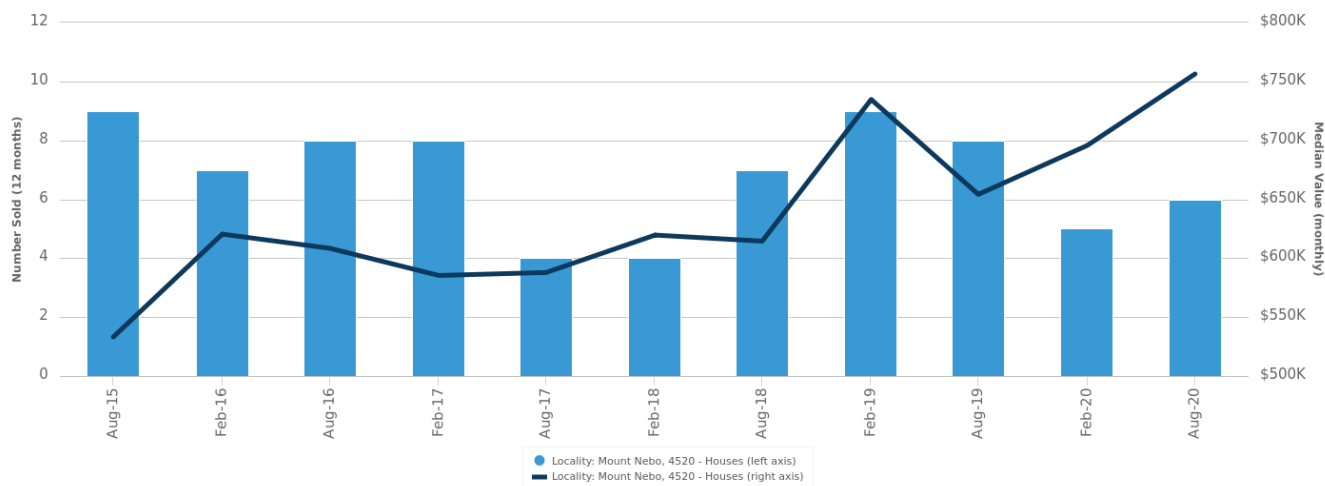
	Total dwellings	Total new listings*	Median Value	Total number currently listed
	169	6	\$713,051	3
	10	1	-	0

*Total number of unique properties listed for sale over the past 12 months.

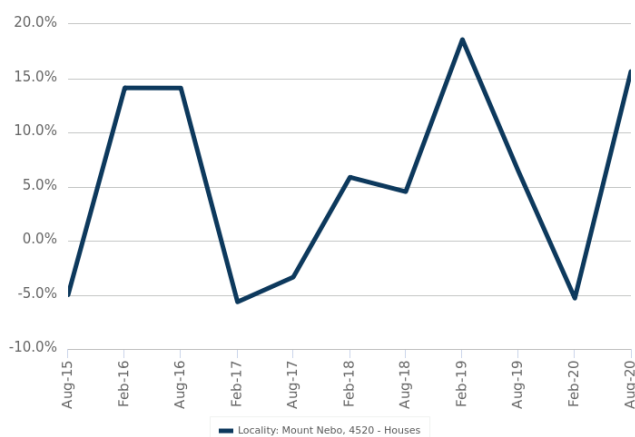


Houses: For Sale

Number Sold vs. Median Value (monthly)



Change in Median Value



\$\$\$

Upper Quartile Price*

\$520,625

The 75th percentile sale price of sales over the past 12 months within the suburb.

\$\$

Median Price*

\$440,000

The middle sale price of all transactions recorded over the past 12 months within the suburb. Note that sale prices lower than \$10,000 and higher than \$80,000,000 are excluded from the analysis.

\$

Lower Quartile Price*

\$382,500

The 25th percentile sale price of sales over the past 12 months within the suburb.

*Statistics are calculated over a rolling 12 month period

Houses: Market Activity Snapshot

On The Market

0

2
BEDROOMS

There are no 2 bedroom Houses on the market in this suburb

Recently Sold

2



16 Bateson Road Mount Nebo QLD 4520

Sold on 17 Oct 2020
\$300,000*

1
 2
 809m²



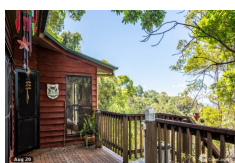
4 Benson Road Mount Nebo QLD 4520

Sold on 06 Sep 2020
\$435,000

2
 1
 609m²

3

3
BEDROOMS



1/2090 Mount Nebo Road Mount Nebo QLD

Listed on 27 Nov 2020
\$780,000

2
 1
 1.34Ha



2 Benson Road Mount Nebo QLD 4520

Sold on 24 Aug 2020
\$410,000

1
 1
 607m²



296 Goat Track Mount Nebo QLD 4520

Listed on 26 Nov 2020
\$650,000

4
 1
 10.31Ha

0

4
BEDROOMS

There are no 4 bedroom Houses on the market in this suburb

1



19 Bateson Road Mount Nebo QLD 4520

Sold on 01 Aug 2020
\$660,000

2
 2
 1,257m²

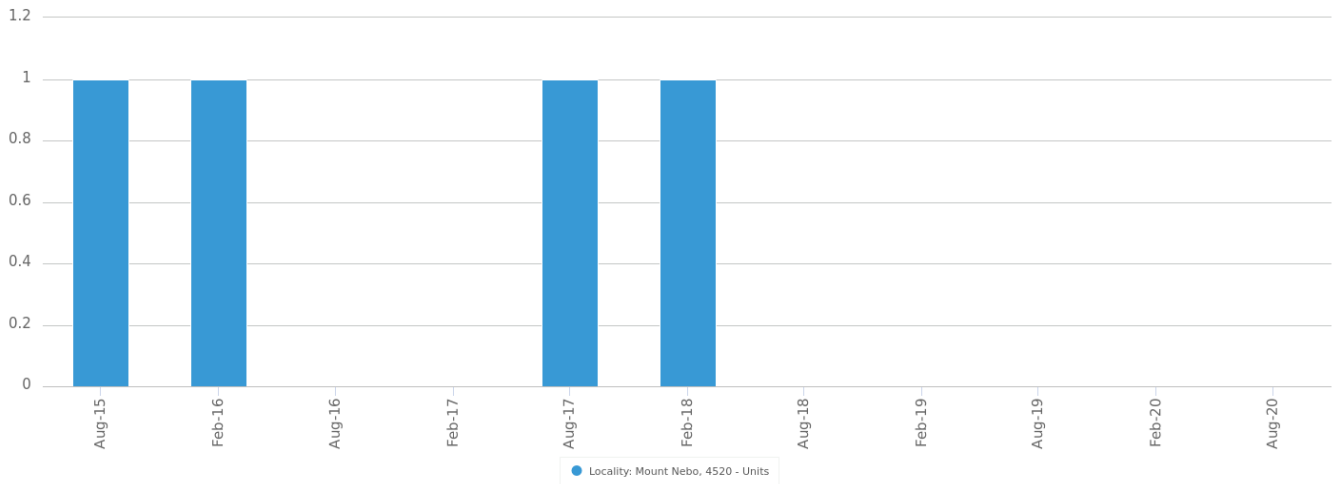


= number of houses currently On the Market or Sold within the last 6 months

*Agent advised

Units: For Sale

Number Sold vs. Median Value (monthly)



Units: Market Activity Snapshot

On The Market



There are no 1 bedroom Units on the market in this suburb

There are no recently sold 1 bedroom Units in this suburb



There are no 2 bedroom Units on the market in this suburb

There are no recently sold 2 bedroom Units in this suburb



There are no 3 bedroom Units on the market in this suburb

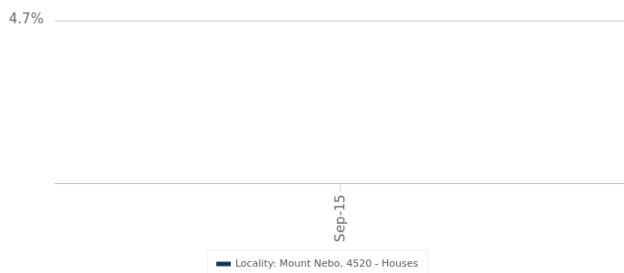
There are no recently sold 3 bedroom Units in this suburb



= number of units currently On the Market or Sold within the last 6 months

Houses: For Rent

Indicative Gross Rental Yield (12 months)



Houses: Rental Activity Snapshot

For Rent

1

2
BEDROOMS



22 Wentworth Avenue
Mount Nebo QLD 4520

Listed on 26 Nov 2020
\$440/W

2

1

1,012m²

0

3
BEDROOMS

There are no 3 bedroom Houses for rent in this suburb

0

4
BEDROOMS

There are no 4 bedroom Houses for rent in this suburb



= number of houses observed as On the Market for Rent within the last month

Units: Rental Activity Snapshot

For Rent




There are no 1 bedroom Units for rent in this suburb



There are no 2 bedroom Units for rent in this suburb



There are no 3 bedroom Units for rent in this suburb

 = number of units observed as On the Market for Rent within the last month

DISCLAIMER

Copyright

This publication reproduces materials and content owned or licenced by CoreLogic and may include data, statistics, estimates, indices, photographs, maps, tools, calculators (including their outputs), commentary, reports and other information (CoreLogic Data).

CoreLogic Standard Disclaimer

The CoreLogic Data provided in this publication is of a general nature and should not be construed as specific advice or relied upon in lieu of appropriate professional advice.

While CoreLogic uses commercially reasonable efforts to ensure the CoreLogic Data is current, CoreLogic does not warrant the accuracy, currency or completeness of the CoreLogic Data and to the full extent permitted by law excludes all loss or damage howsoever arising (including through negligence) in connection with the CoreLogic Data.

This publication contains data and statistics provided by the Australian Bureau of Statistics, available at <http://www.abs.gov.au/> and reproduced under Creative Commons Attribution 2.5 <http://creativecommons.org/licenses/by/2.5/au/legalcode>.

Mapping Data

A map showing an area or boundaries of a property is indicative only and may not be complete or accurate.

State and Territory Data

Based on or contains data provided by the State of Queensland (Department of Natural Resources and Mines) 2020. In consideration of the State permitting use of this data you acknowledge and agree that the State gives no warranty in relation to the data (including accuracy, reliability, completeness, currency or suitability) and accepts no liability (including without limitation, liability in negligence) for any loss, damage or costs (including consequential damage) relating to any use of the data. Data must not be used for direct marketing or be used in breach of the privacy laws; more information at www.propertydatacodeofconduct.com.au

If you have any questions or concerns about the information in this report, please contact our customer care team.

Within Australia: **1300 789 449**
Outside Australia: **(+61) 7 3114 9999**
Email us: customercare@corelogic.com.au