

# Suburb Profile Report

## Draper QLD 4520

Prepared on 04 December 2020

Prepared by Jason Mrak | [Jason@wardrealestate.com.au](mailto:Jason@wardrealestate.com.au) | +61413577211



**CoreLogic**<sup>®</sup>





**17km**  
Distance from GPO

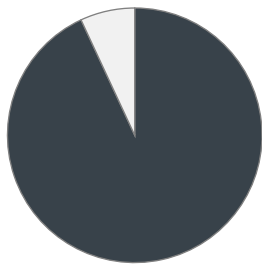


**675**  
Population  
**↑ 3.5%**  
5 year population change



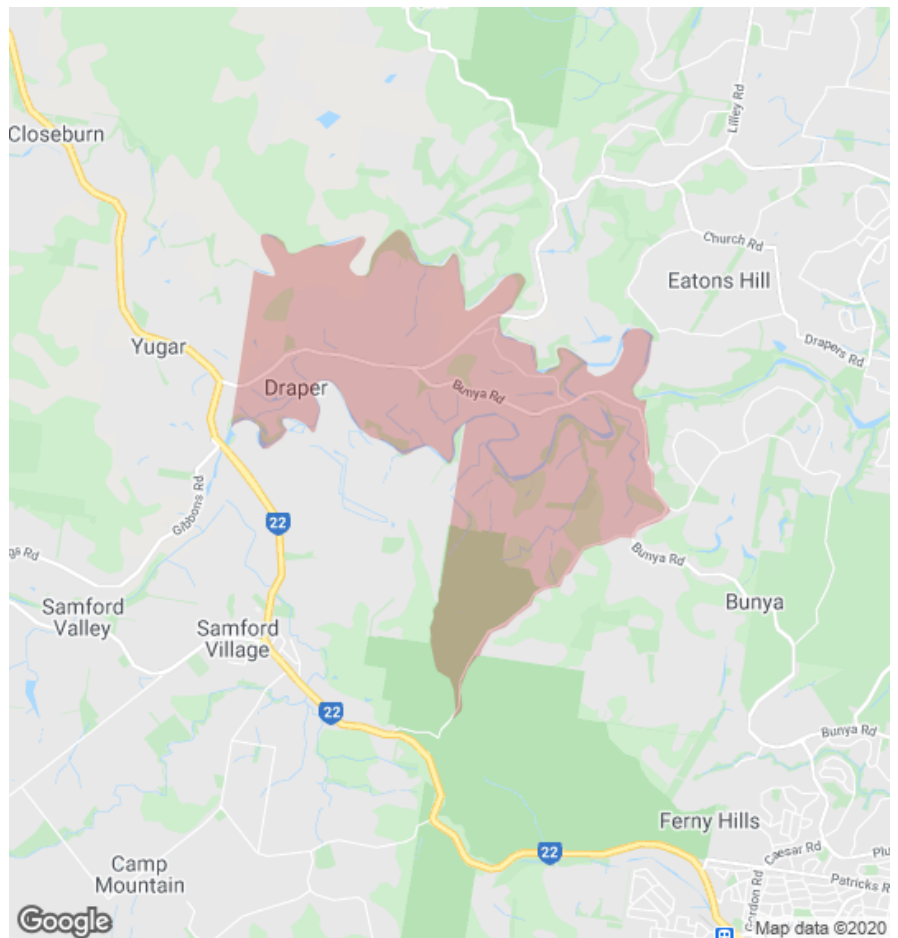
**-**  
Average length of ownership

7%



93%

■ Owner Occupiers □ Renters



The size of Draper is approximately 9.5 square kilometres. It has 17 parks covering nearly 18.2% of total area. The population of Draper in 2011 was 652 people. By 2016 the population was 675 showing a population growth of 3.5% in the area during that time. The predominant age group in Draper is 40-49 years. Households in Draper are primarily couples with children and are likely to be repaying \$1400 - \$1799 per month on mortgage repayments. In general, people in Draper work in a professional occupation. In 2011, 91.4% of the homes in Draper were owner-occupied compared with 95.4% in 2016. Currently the median sales price of houses in the area is \$912,500.

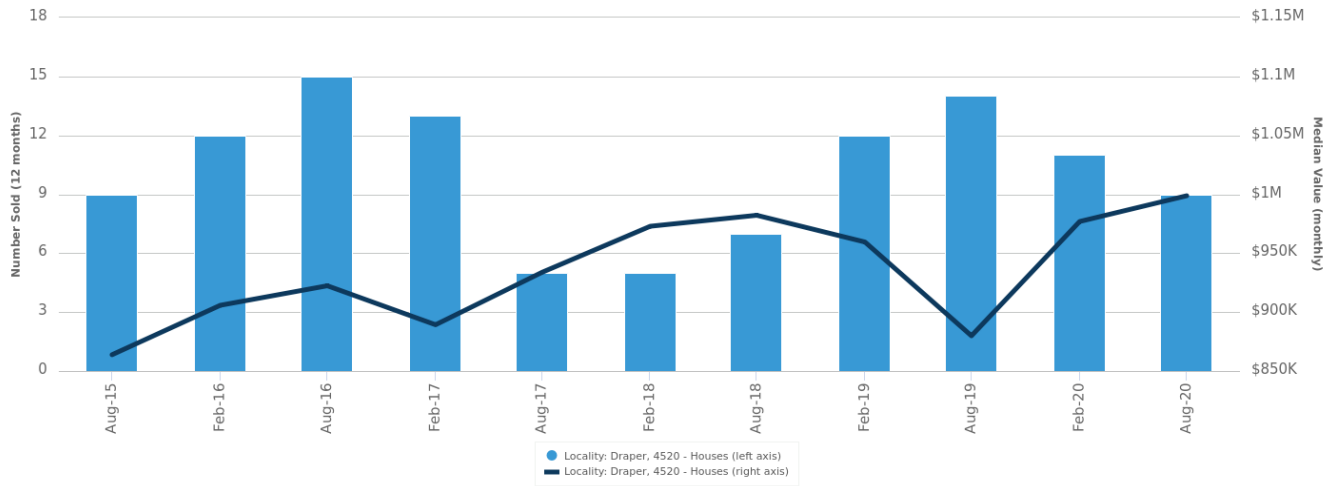
	Total dwellings	Total new listings*	Median Value	Total number currently listed
	203	12	\$1,031,098	6
	11	-	-	0

\*Total number of unique properties listed for sale over the past 12 months.

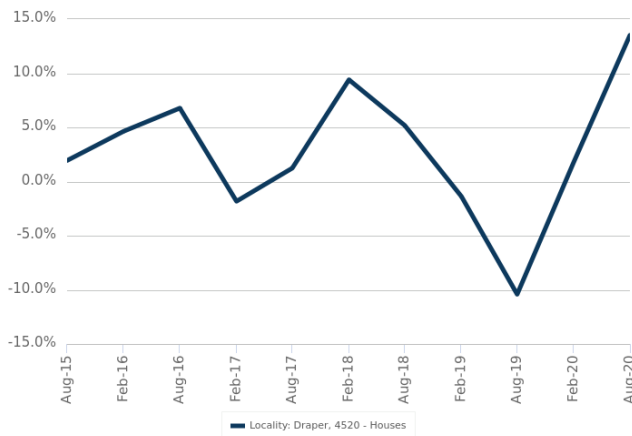


## Houses: For Sale

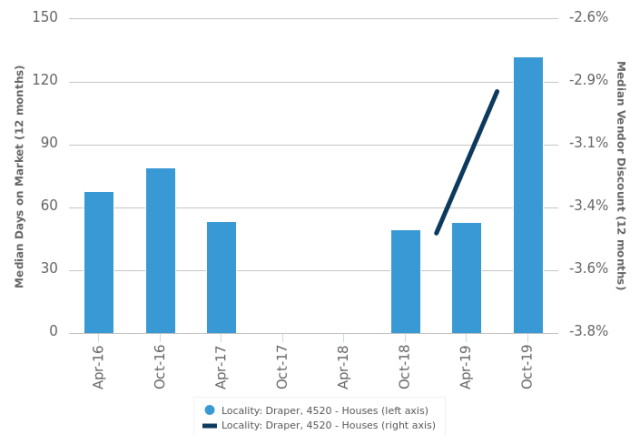
Number Sold vs. Median Value (monthly)



Change in Median Value



Median Days on Market vs. Median Vendor Discount



\$\$\$

Upper Quartile Price\*

\$983,000

The 75th percentile sale price of sales over the past 12 months within the suburb.

\$\$

Median Price\*

\$912,500

The middle sale price of all transactions recorded over the past 12 months within the suburb. Note that sale prices lower than \$10,000 and higher than \$80,000,000 are excluded from the analysis.

\$

Lower Quartile Price\*

\$832,000

The 25th percentile sale price of sales over the past 12 months within the suburb.

\*Statistics are calculated over a rolling 12 month period

## Houses: Market Activity Snapshot

### On The Market

0

2  
BEDROOMS

### Recently Sold

0

There are no 2 bedroom Houses on the market in this suburb There are no recently sold 2 bedroom Houses in this suburb

0

3  
BEDROOMS

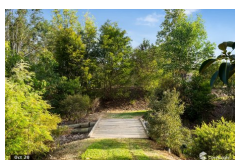
0

There are no 3 bedroom Houses on the market in this suburb There are no recently sold 3 bedroom Houses in this suburb

1

4  
BEDROOMS

2



**21-33 Oak River Road  
 Draper QLD 4520**

Listed on 01 Dec 2020  
[Under Contract](#)

6  
 2  
 2.01Ha



**1004 Bunya Road Draper  
 QLD 4520**

Sold on 13 Jun 2020  
 \$932,000

4  
 2  
 5.30Ha



**909 Eatons Crossing Road  
 Draper QLD 4520**

Sold on 11 Jun 2020  
 \$1,850,000

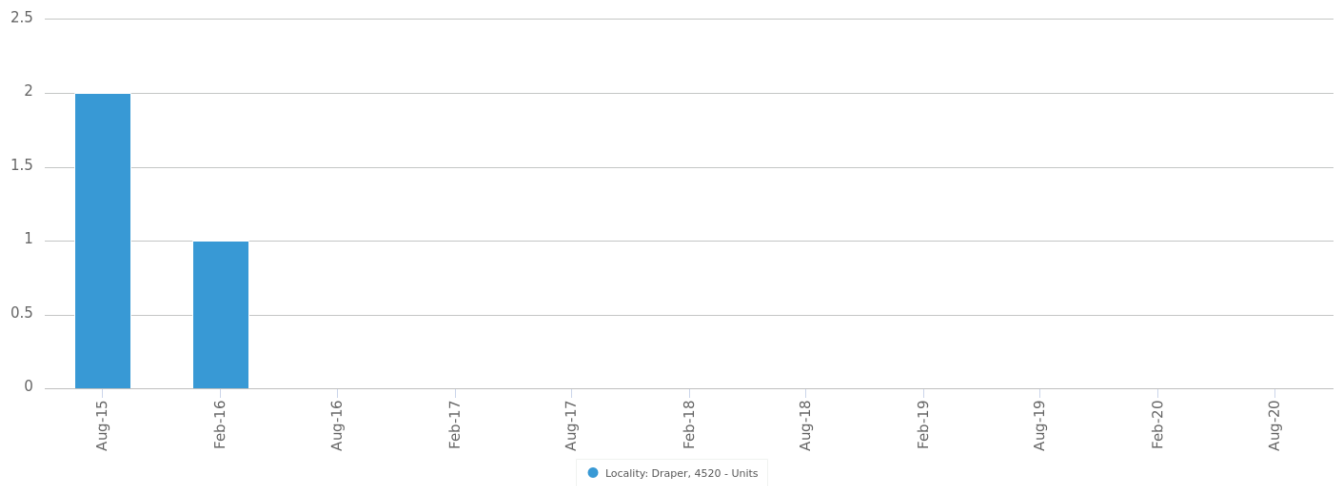
3  
 2  
 8.47Ha



= number of houses currently On the Market or Sold within the last 6 months

## Units: For Sale

Number Sold vs. Median Value (monthly)



## Units: Market Activity Snapshot

### On The Market



There are no 1 bedroom Units on the market in this suburb

There are no recently sold 1 bedroom Units in this suburb



There are no 2 bedroom Units on the market in this suburb

There are no recently sold 2 bedroom Units in this suburb



There are no 3 bedroom Units on the market in this suburb

There are no recently sold 3 bedroom Units in this suburb



= number of units currently On the Market or Sold within the last 6 months

## Houses: Rental Activity Snapshot

For Rent



There are no 2 bedroom Houses for rent in this suburb



There are no 3 bedroom Houses for rent in this suburb



There are no 4 bedroom Houses for rent in this suburb

 = number of houses observed as On the Market for Rent within the last month

## Units: Rental Activity Snapshot

For Rent




There are no 1 bedroom Units for rent in this suburb



There are no 2 bedroom Units for rent in this suburb



There are no 3 bedroom Units for rent in this suburb

 = number of units observed as On the Market for Rent within the last month



## DISCLAIMER

### Copyright

This publication reproduces materials and content owned or licenced by CoreLogic and may include data, statistics, estimates, indices, photographs, maps, tools, calculators (including their outputs), commentary, reports and other information (CoreLogic Data).

### CoreLogic Standard Disclaimer

The CoreLogic Data provided in this publication is of a general nature and should not be construed as specific advice or relied upon in lieu of appropriate professional advice.

While CoreLogic uses commercially reasonable efforts to ensure the CoreLogic Data is current, CoreLogic does not warrant the accuracy, currency or completeness of the CoreLogic Data and to the full extent permitted by law excludes all loss or damage howsoever arising (including through negligence) in connection with the CoreLogic Data.

This publication contains data and statistics provided by the Australian Bureau of Statistics, available at <http://www.abs.gov.au/> and reproduced under Creative Commons Attribution 2.5 <http://creativecommons.org/licenses/by/2.5/au/legalcode>.

### Mapping Data

A map showing an area or boundaries of a property is indicative only and may not be complete or accurate.

### State and Territory Data

Based on or contains data provided by the State of Queensland (Department of Natural Resources and Mines) 2020. In consideration of the State permitting use of this data you acknowledge and agree that the State gives no warranty in relation to the data (including accuracy, reliability, completeness, currency or suitability) and accepts no liability (including without limitation, liability in negligence) for any loss, damage or costs (including consequential damage) relating to any use of the data. Data must not be used for direct marketing or be used in breach of the privacy laws; more information at [www.propertydatacodeofconduct.com.au](http://www.propertydatacodeofconduct.com.au)

If you have any questions or concerns about the information in this report, please contact our customer care team.

Within Australia: **1300 789 449**  
Outside Australia: **(+61) 7 3114 9999**  
Email us: [customercare@corelogic.com.au](mailto:customercare@corelogic.com.au)