



27 Pullen Road EVERTON PARK, QLD



3



2



3

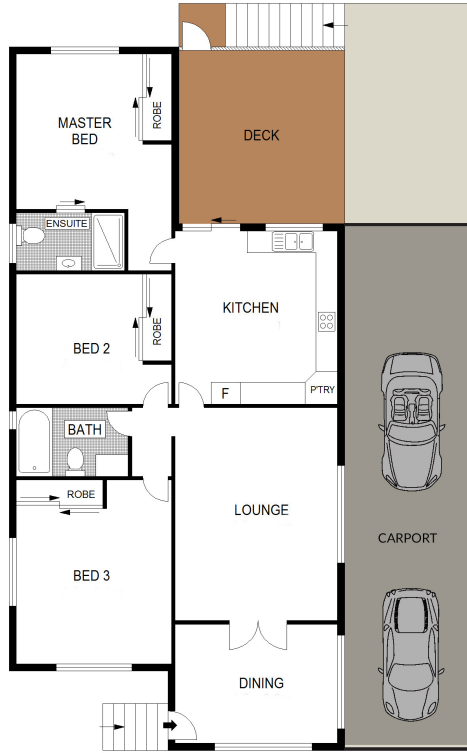
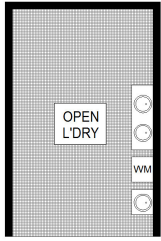
Queensland lifestyle - Big Deck, Big Backyard & Big Shed

This beautiful post war Queenslander sits on a 607m2, modernised block, with the perfect blend of yesteryear and all the current conveniences. Ornate cornicing, French doors, timber floors, high ceilings and classic gables all display the elegance and timeless appeal of Queenslanders.

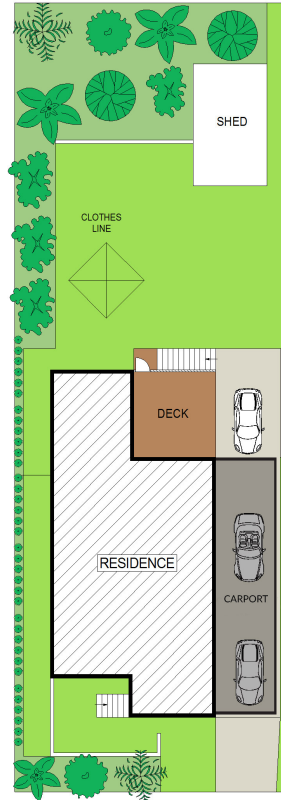
The modern open plan kitchen services the large lounge / dining room and flows onto the rear deck; with a north-easterly aspect for cooling summer breezes and private views of the backyard and surrounds.

Home

- Main bedroom has ensuite
- 4-5 mins to several schools (Everton Park State School, Northside Christian College, Mt



GROUND FLOOR



SITE PLAN (NOT TO SCALE)



Scale in metres. Indicative only. Dimensions are approximate. All information contained herein is gathered from sources we believe to be reliable. However we cannot guarantee its accuracy and interested persons should rely on their own enquiries.

27 Pullen Road, Everton Park