

CASHMERE, QLD

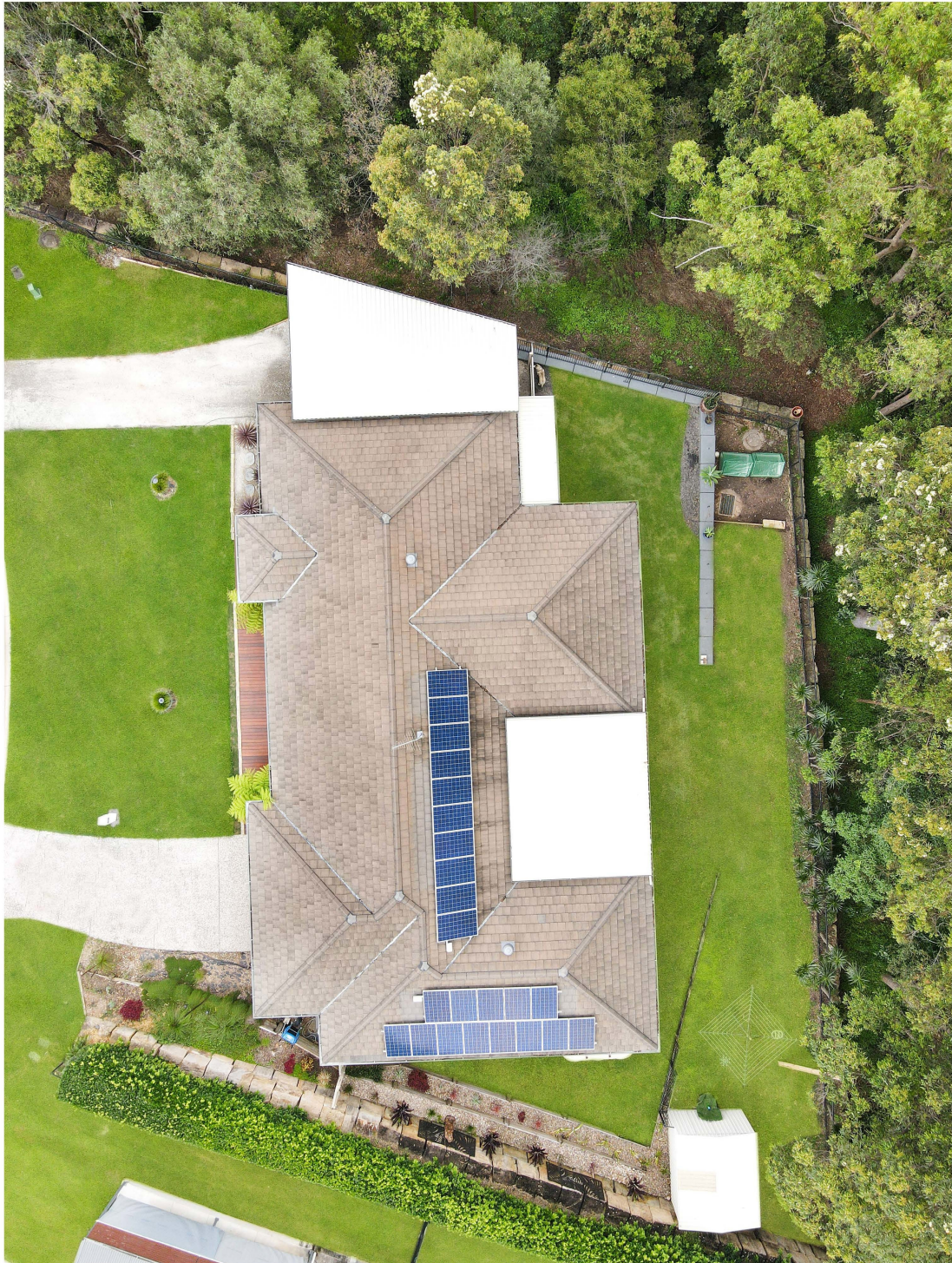


Quality family home on 1250m2 in a private bushland setting

Award winning Brad McLauchlan built home is immaculately presented and will impress the most discerning buyer with high-end appointments throughout.

- * Large living and dining rooms serviced by the large designer kitchen
- * Separate media room will be a hit with your whole family
- * Impressive master bedroom with walk-in robe, luxury ensuite and connecting sitting room/ gym or nursery.
- Three additional bedrooms share the main bathroom with oversize shower.

The living, dining and master bedroom all open to the huge alfresco patio that showcases p



Whilst every attempt has been made to ensure accuracy, floor plans are representative and should be used as a guide only