



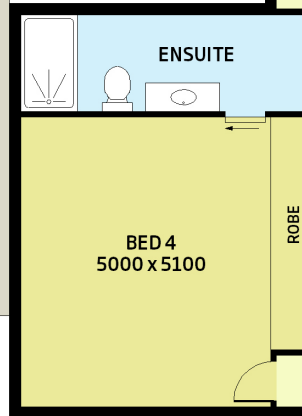
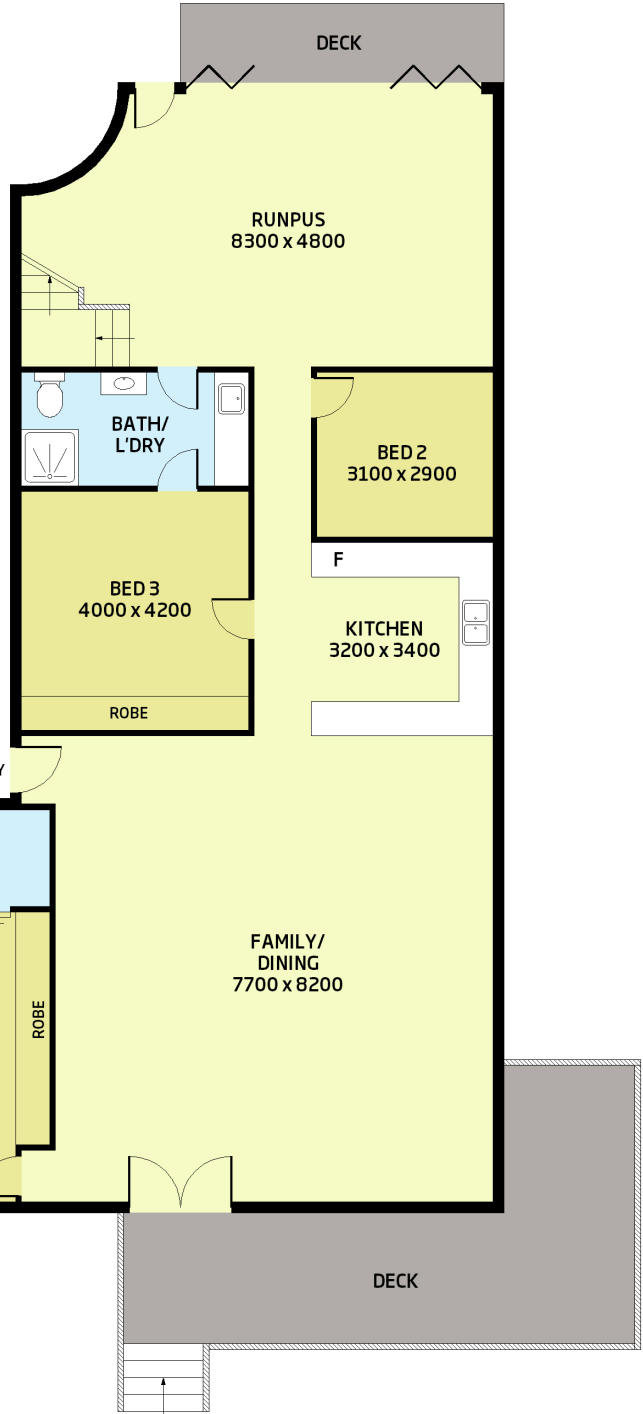
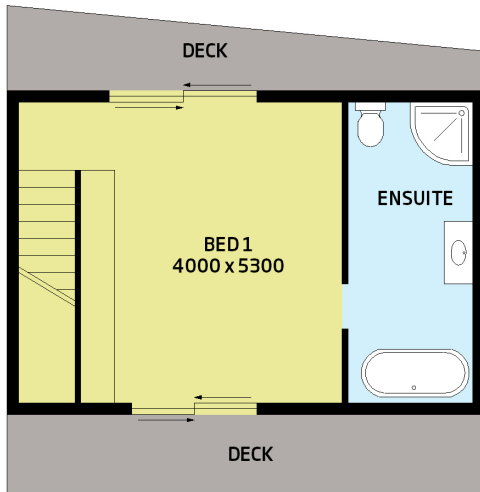
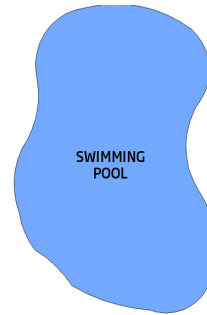
11 Esplande DONNYBROOK, QLD
 4  3  3

A Unique Waterfront Retreat on 1126m2

- ? 4 Bed
- ? 3 Bath
- ? 3 Car
- ? Living over 2 levels
- ? 1126m2 yard

Situated in a fantastic position overlooking Pumicestone Passage, this home is unique with rare waterfront aspect. This charismatic home celebrates the tropical Queensland lifestyle, with exceptional indoor/outdoor integration and fabulous water views and living over two levels..

Offering the owners, 4 bedrooms, 3 bathrooms, winter and summers decks, casual dining, rumpus, tv area, and front verandah. The open plan kitchen forms the central hub on the ground floor and leads to your choice of seasonal decks which embrace the home over two levels.



11 Esplanade Donn

11 Esplanade

DONNYBROOK QLD

Scale in metres. Indicative only.
Errors or omissions in Scale do not
cannot guarantee its accuracy an

Selling Brisbane
Jason Mrak

WARD
Real Estate
tion
ever we
own enquiries.