



5 Janley Court WIGHTS MOUNTAIN, QLD



CLASSIC QUEENSLAND LIVING IN A PICTURE POSTCARD SETTING

SNAPSHOT

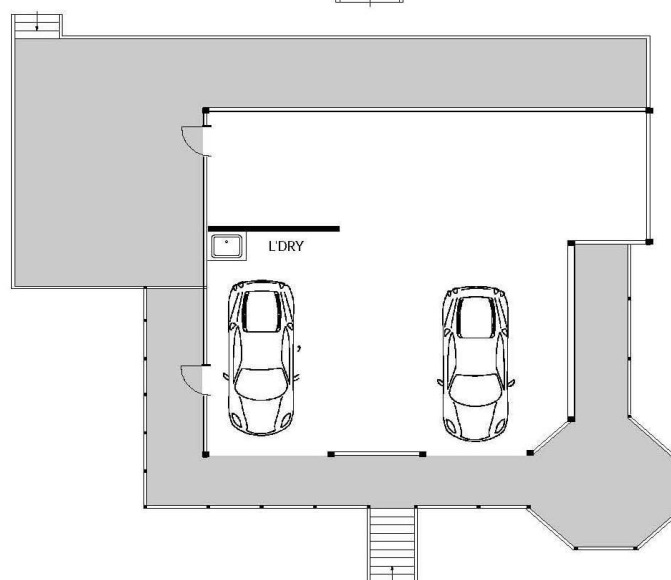
- * 5 acres
- * 4 bedrooms
- * 2 bathrooms
- * 2 living areas
- * Wraparound verandahs
- * 9m x 6m entertaining deck
- * Original barn and milking shed
- * Bore, multiple water storage tanks, dam

When the current owners built this grand reproduction Queenslander in 2003, they wanted to create not only a beautiful and functional home for their family in a peaceful, rural location, but one that would effortlessly adapt to the changing seasons. Sitting at the end of a private, tree bordered driveway and overlooking two of the original Smiths Farm outbui

FLOORPLAN



Upper Level



Ground Level

5 Janley Court, Wights Mountain

Whilst every attempt has been made to ensure accuracy, floor plans are representative and should be used as a guide only