



3 Katelyn Court CASHMERE, QLD

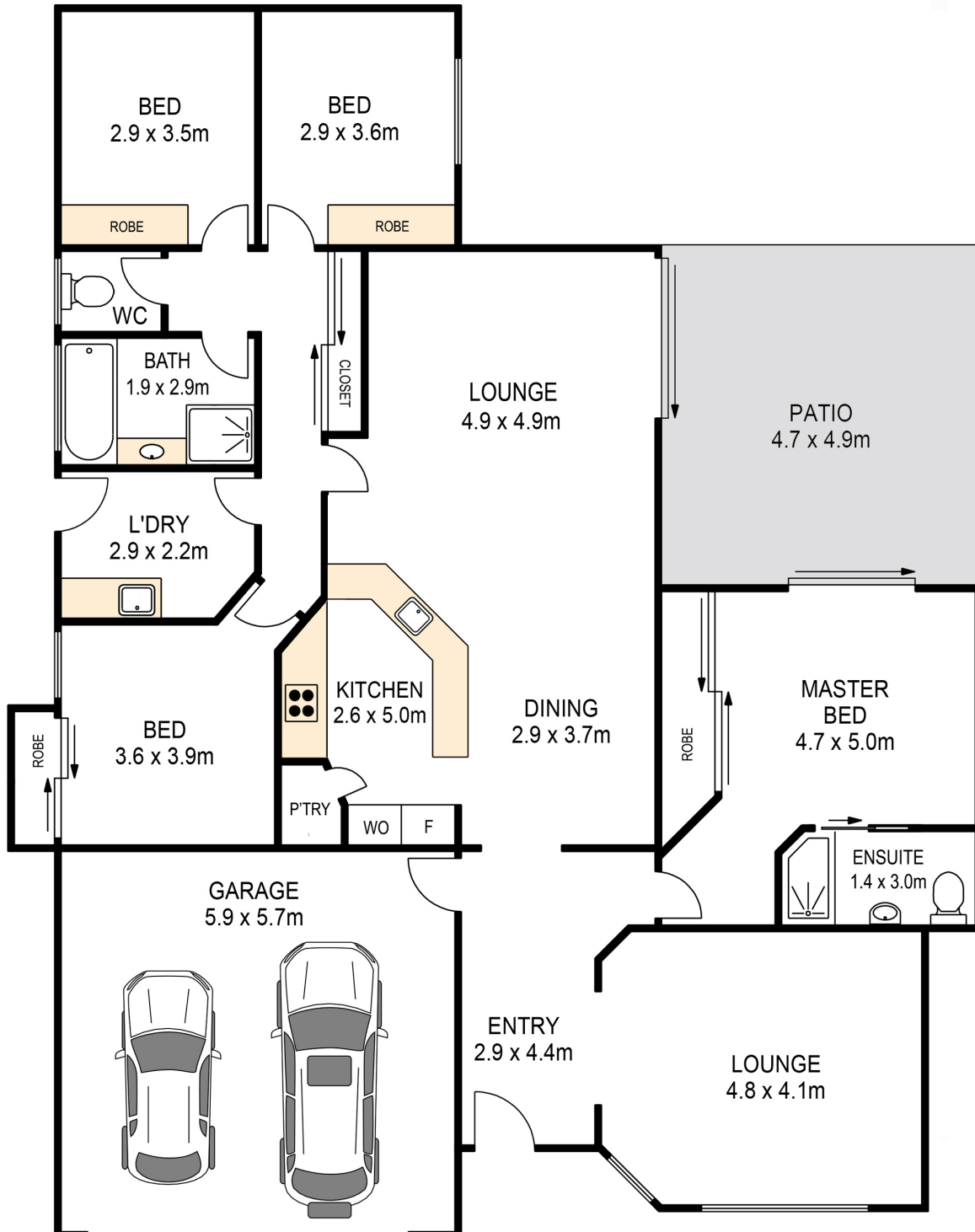


Relaxed 4 Bedroom Home - Family Living

This family home located in leafy Cashmere has a very clever design that suits family living. The parents bedroom and main lounge are separate from the other 3 bedrooms and family, kitchen and dining area. For those with young children, this means you can put them to bed and still watch your favourite TV series at night. The size of the main lounge means that you fit the whole family easily for movie nights.

The kitchen has been recently renovated and provides a hub for family living and meals. The sliding door access out to the entertainment area and its north easterly aspect allows a great place to relax and cook a family BBQ or have a morning coffee before work.

The back yard has heaps of room for a trampoline or area for the kids and pets to play too. With a little adjustment, you could even be able to park a trailer or small boat around the side of the house. Being elevated - you have views across the neighbouring trees and u



3 Katelyn Court, Cashmere

Whilst every attempt has been made to ensure accuracy, floor plans are representative and should be used as a guide only